

Got Questions?



# VERMONT COMPUTING INC.

Email us and we might feature your question in the newsletter!

newsletter@vermontcomputing.com

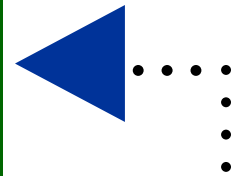


## Store Hours

Mon – Fri 8:00 – 6:00

Sat & Sun 10:00 – 12:00

# VCI



Vol 6 Issue 12  
Newsletter

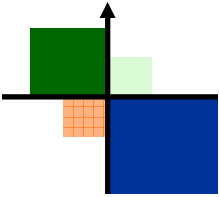
### Details:

**VCI News:**  
Help Wanted  
Turkey Day  
Monster Gamin' VCPC

**Tech News:**  
Automatic Logon-  
Windows XP

**Peripherals:**  
Linux  
YouTube  
IE 7

**Vermont Computing, Inc.**  
23 Merchants Row  
Randolph, VT 05060  
Tel: (802) 728-9217  
[www.vermontcomputing.com](http://www.vermontcomputing.com)



# VCI NEWS

## Help Wanted

Vermont Computing is growing! With that growth, comes a high demand for its services and expertise and now we need to add an **experienced computer technician**. This is an excellent opportunity to join this fast growing Vermont company.

VCI also has an employee leaving soon to further her education in college. This means that VCI is now looking for a new **Office Manager** preferably with typing ability and organizational skills.

If you could fill either of these positions and you are looking for a change, up to full time work and an equal opportunity employer, please send us an email at : [jobs@vermontcomputing.com](mailto:jobs@vermontcomputing.com).

Any of our readers who may know of someone with the above qualifications are encouraged to ask them to apply.



### TURKEY DAY:

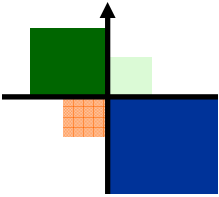
To allow everyone to relax and enjoy the holidays, we will be closed from the 22nd to the 26th of November for Thanksgiving. We will open again at 8:00 AM on the 27th of November. Vermont Computing, Inc. hopes everyone has a great holiday!

## VCI Custom-Builds a Monster Gaming PC!!

As many of our customers already know, VCI builds new and custom computers. Recently, we received an order for a truly unique computer from a customer, John, in Randolph. John is an avid computer gamer and wanted a special computer to support his hobby, so he collaborated with Joe Hoisington, our Senior Technician and what they came up with is a real screamer:

- |  |   |
|--|---|
| Power supply: Antec TruePower Trio 650W        | Floppy drive: ALPS 3.5"                               |
| Motherboard: ASUS M2N32-SLT Deluxe             | Hard Drives: 2x Seagate 120GB SATA NCQ (RAID 1 array) |
| RAM: 2GB Corsair TwinX DDR2-800                | DVD: Lite-On DVD Burner                               |
| CPU: AMD Athlon 64 FX-62 (AM2)                 | Cooling System: Antec 120mm Fan                       |
| Graphics Card: BFG GeForce 7900GTX 512MB PCI-e | Zalman AM2 Ultra-quiet Super Cooler                   |

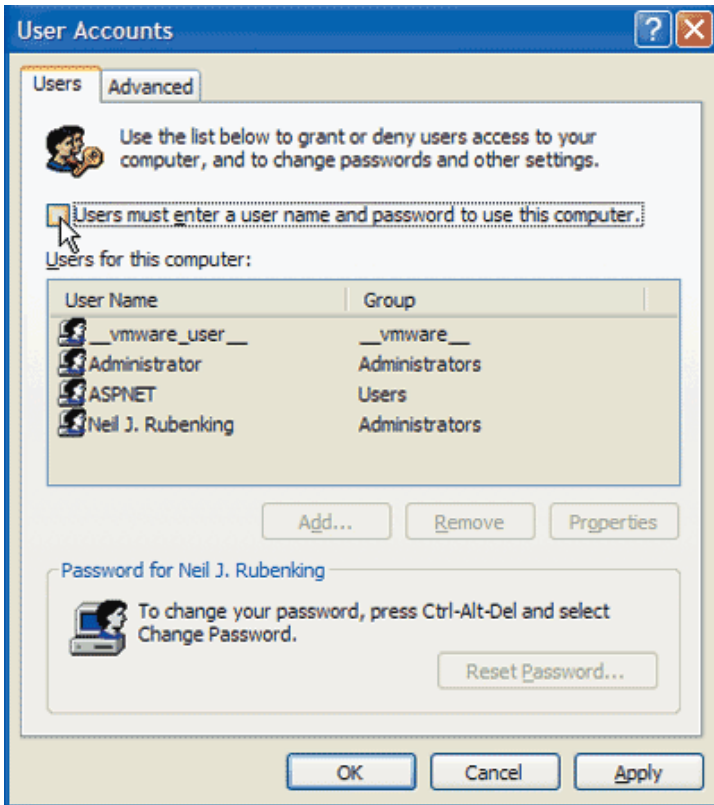
Of course, like all VCI computers, it comes with a full 3-year warranty on parts and a free maintenance plan. Enjoy your new machine, John, and many thanks for the opportunity to build it for you!



# TECH NEWS

## Automatic Logon!

**FIGURE A**



**Mark Kaelin,**  
<[www.techrepublic.com](http://www.techrepublic.com)>

**Problem**

In versions of Microsoft Windows prior to XP, you could set up your PC to automatically log on and load the desktop, by bypassing the normal logon/welcome screen. In Windows XP, if there is only one user account, it is relatively simple to set up the system to automatically log on. However, if there is more than one user account, designating that all of the accounts can automatically log on is much more obscure.

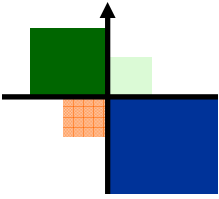
**Solution**

To get access to a user account control panel that will allow you to set up accounts for automatic logon in Windows XP, you must use the command line and an obscure control application. At the command prompt, enter: `control userpasswords2` . That command will open control panel that looks like **Figure A**.

From this control panel, you can uncheck the Users Must Enter A Name And Password To Use This Computer setting. When you click the Apply or OK button, you will be asked to supply a password (you can leave it blank). After clicking OK on that screen, you will have set your PC to log on automatically.

“This dialog also lets you define a particular account as a Standard user, a status in between the Limited user and Administrator user categories available in the Control Panel's normal User Accounts applet.

Of course, once you set up the machine for automatic login anybody can login to your account. Only configure automatic login when the computer itself is physically secure, for example, in a locked office. ” (Neil Rubenking, PCMag)



## PERIPHERALS



Microsoft

### **Microsoft To Announce Linux Partnership**

<[www.slashdot.com](http://www.slashdot.com)>

[Carl Bialik from WSJ](#) writes "Microsoft is entering into an unusual partnership with Novell that gives a boost to Linux, people familiar with the companies tell WSJ.com. From the article: 'Under the pact, which isn't final, Microsoft will offer sales support of Suse Linux, a version of the operating system sold by Novell. The two companies have also agreed to develop technologies to make it easier for users to run both Suse Linux and Microsoft's Windows on their computers. The two companies are expected to announce details of their plan today at a press conference in San Francisco. In addition, Microsoft won't assert rights over patents over software technology that may be incorporated into Suse Linux, the people said. Businesses that use Linux have long worried that Microsoft would one day file patent infringe-



### **YouTube Signing Rights Issues**

<[www.slashdot.com](http://www.slashdot.com)>

[Carl Bialik from WSJ](#) writes "YouTube executives are finding it a slog to get all of the necessary permissions to license the songs and shows users are putting on the popular site, the Wall Street Journal reports. 'YouTube or its partners must locate parties ranging from studios to actors, and from music composers to the owners of venues, and get them to sign off. Where they don't succeed, YouTube risks being hit with lawsuits or having to take popular content down. "It's such a mess because the [entertainment companies] have all of these valuable assets that are just locked up with so many people who need to sign off on them," says YouTube Chief Executive Chad Hurley. "I don't know what it requires, if the government needs to be involved," Mr. Hurley laughs. "I don't know.'"

## IE 7- BAD IDEA



Microsoft has recently issued the option of upgrading to version 7.0 of Internet Explorer. As the employees of Vermont Computing, Inc. have recently realized that it creates more problems than solutions, we are discouraging installations of this version. Many times, new software is not fully tested before it is released to the public, and we believe this is what has occurred with this new version of Internet Explorer.